



VETERINARY FORMULA
Wiser Concepts[®]

KPPvet.com

Developed by:



Product Catalog

Supplements available only through licensed veterinarians



Choose Wisser Concepts products.



Wiser Concepts® products are developed by Kentucky Performance Products (KPP). For over 20 years, veterinarians and horse owners have trusted KPP to provide them with products that address the specific challenges facing their horses.

Like all KPP products, Wiser Concepts' veterinarian-formula products are affordable, made with high-quality ingredients, and backed by sound research.

Wiser Concepts products were specifically developed to be recommended by veterinarians. They complement individual treatment and wellness plans with the goal of supporting healing and maintaining optimal health. They are available only through licensed veterinarians.

When you have questions, KPP has answers.

If you need advice on when and how to use a Wiser Concepts product, contact us. KPP's Wiser Concepts product experts are experienced horse owners who have been involved in many aspects of product development, and they use Wiser Concepts products daily on their own horses.



How to contact us

There are multiple ways to reach us. You can call us at 859-873-2974 (Monday through Friday 8 a.m. to 5 p.m. EST) or send an email to info@KPPusa.com.

If it is more convenient, you can private message us on Facebook at [@KentuckyPerformanceProductsLLC](https://www.facebook.com/KentuckyPerformanceProductsLLC) any time. Follow us on Instagram at <https://www.instagram.com/kentuckyperformanceproducts/>. You can also visit KPPvet.com to learn more about our products.

We stand behind our products and offer a 100% satisfaction guarantee.

It is easy for KPP to stand behind our products because we believe in them. Your complete satisfaction is guaranteed. If you are unsatisfied with any of our products, contact us for a refund or replacement.



Developed by:





BoneWise®

Supports bone development in horses of all ages.

BoneWise contains a unique form of calcium, a calcareous marine alga known as Lithothamnion.

The natural minerals in Lithothamnion are easily digested and absorbed; they are research-proven to maintain optimal bone remodeling and healthy bone density.

The minerals found in Lithothamnion are arranged in a distinctive honeycomb construction that increase digestibility. Because of its varied crystalline forms and honeycomb structure, Lithothamnion provides a large surface upon which digestive enzymes can act, allowing for the optimal release and uptake of minerals over extended periods of time. Lithothamnion contains the trace minerals magnesium, boron, silicon, zinc, and manganese.

Available Sizes:

- **10 lb** (4.53 kg) bucket (contains 80 scoops)
- **20 lb** (9.09 kg) bucket (contains 160 scoops)

Ingredients:

Seaweed-derived calcium, ground wheat, flaxseed meal, yeast culture, soybean oil, magnesium oxide, zinc polysaccharide complex, copper polysaccharide complex, manganese polysaccharide complex, vitamin D3 supplement, natural and artificial flavors.

Supplementation is recommended when horses are:

- Confined to a stall/laid up
- Competing or racing regularly
- Exhibiting signs of bucked shins, osteochondritis dissecans (OCD), and other developmental bone diseases
- Growing (weanlings, yearlings and 2-year-olds)
- Training
- Recovering from a skeletal injury
- In the third trimester of pregnancy



Dosage and administration

FEEDING RECOMMENDATIONS

1 scoop = 2 ounces

Mix into feed at the rate of 2 scoops (4 oz) daily for all classes and ages of horses. When possible, split the amount into two 2-oz servings per day.



Guaranteed Analysis

	Per 4 oz	Concentration
Calcium (Min.)	16 g	14%
Calcium (Max.)	18 g	16%
Magnesium (Min.)	3,400 mg	3%
Zinc (Min.)	97 mg	860 ppm
Copper (Min.)	43 mg	380 ppm
Manganese (Min.)	41 mg	360 ppm
Vitamin D3 (Min.)	3,750 IU	15,000 IU/lb



Research at Michigan State University found that at the end of a trial, horses supplemented with Lithothamnion had 11% more bone mineral content than the control group.

Results of Lithothamnion Supplementation:

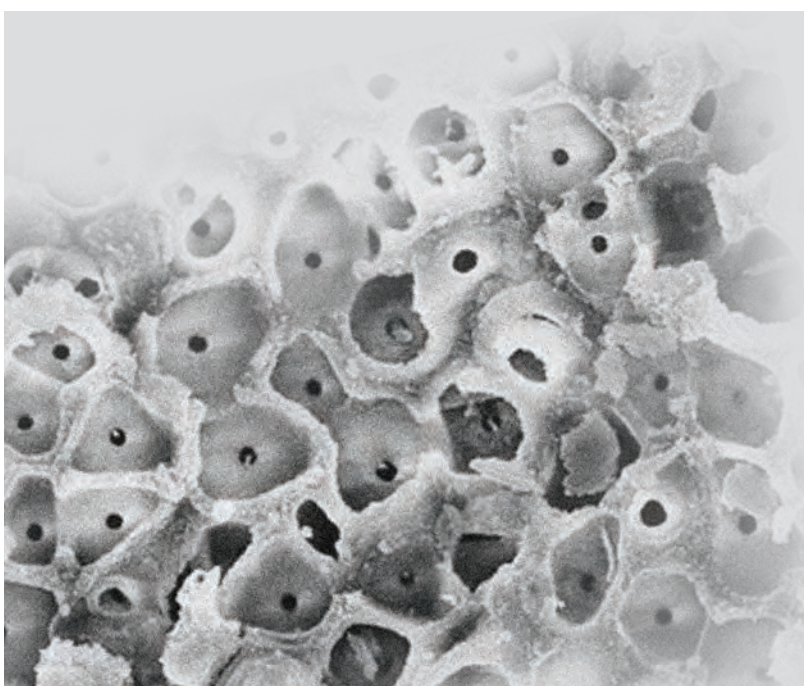
- Significant increase in blood markers for bone metabolism and density
- Increased osteocalcin levels (measure of bone formation)
- Increased CTX-1 levels (measure of bone resorption)
- 11% greater bone mineral content at the end of the trial as compared to the calcium carbonate supplemented group



SKELETAL SUPPORT

Lithothamnion's unique honeycomb structure makes minerals readily available

- Maintains optimal skeletal development in growing horses.
- Supports strong resilient bones in performance horses.
- Sustains healthy bone density levels in layups.





ProbioticWise®: Three Products in One

Innovative, research-proven formula that combines *Saccharomyces boulardii* and fermentation metabolites to establish a three-pronged approach to digestive tract health.

CAPTURES
and sweeps out
pathogenic bacteria

SUPPORTS
healing and
maintains healthy
gut tissues

SUSTAINS
a robust
microbiome

Available Sizes:

- **2.5 lb** (1.13 kg) bucket (contains 40 scoops)
- **9.5 lb** (4.31 kg) bucket (contains 152 scoops)
- **60cc** oral syringe (contains 4 servings)

Active ingredients per 1 ounce of powder:

Fermentation Metabolite
2,500 mg
Saccharomyces Boulardii
20 billion CFU

Inactive ingredients:

Distillers dried grains, hydrolyzed yeast, yeast extract, yeast culture, coconut oil, and calcium carbonate.

Active ingredients per 60cc of paste:

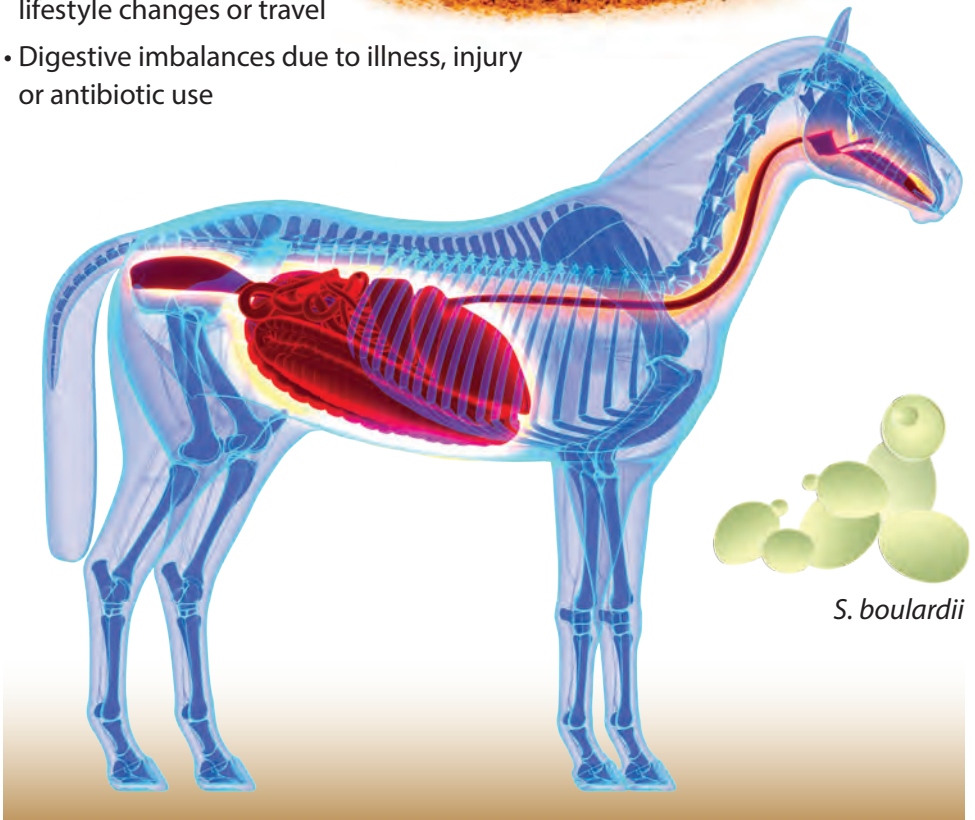
Fermentation Metabolite
10,000 mg
Saccharomyces Boulardii
80 billion CFU

Inactive ingredients

Hydrolyzed yeast, yeast extract, yeast culture, soybean oil (cold-pressed), silica gel, vitamin E supplement, soy lecithin, glycerin, artificial flavor, stevia, coconut oil, and citric acid.

Supplementation is recommended to support the restoration of normal GI tract function in horses challenged by:

- Acute or chronic diarrhea
- Colic
- Foal scours
- Colonic or gastric ulcers
- Digestive distress due to lifestyle changes or travel
- Digestive imbalances due to illness, injury or antibiotic use



Dosage and administration

ProbioticWise powdered formula

SERVING INSTRUCTIONS

ADULT HORSES

- Daily maintenance: 1 scoop (1 oz) per day.
- To support horses during competition, training or shipping: 2 scoops (2 oz) per day.
- To support restoration of normal gut function: 3 to 4 scoops (3 to 4 oz) daily for 3 to 5 days and then reduce to 2 scoops (2 oz) thereafter.
- In horses experiencing digestive problems, a veterinarian may recommend higher levels for short-term use. Consult with your veterinarian for any use above 3 scoops (3 oz) per day. Do not exceed 6 scoops (6 oz) per day.



FOALS

- To support digestive tract health in newborn foals: 1 scoop (1 oz) daily from 1 through 10 days of age.
- To support restoration of normal gut function in foals: 2 scoops (2 oz) daily for 3 to 5 days and then reduce to 1 scoop (1 oz) daily thereafter. Do not exceed 2 scoops (2 oz) per day.

ProbioticWise paste formula

SERVING INSTRUCTIONS

ADULT HORSES

- Daily maintenance: 15cc per day.
- To support horses during competition, training or shipping: 30cc per day.
- To support restoration of normal gut function: 45cc to 60cc daily for 3 to 5 days and then reduce to 30cc thereafter.
- In horses experiencing digestive problems, a veterinarian may recommend higher levels for short-term use. Consult with your veterinarian for any use above 45cc per day. Do not exceed 90cc per day.



FOALS

- To maintain digestive tract health in newborn foals: 15cc daily from 1 through 10 days of age.
- To support restoration of normal gut function in foals: 30cc daily for 3 to 5 days and then reduce to 15cc thereafter. Do not exceed 30cc per day.



***S. Boulardii* contributes multiple supportive functions to the horse's GI tract.**

Studies indicate that *Saccharomyces boulardii*:

- Maintains the functionality of and healing of damaged intestinal tissues by secreting factors that support the repair of damaged cells in the gut epithelium.
- Supports conditions that improve or halt episodes of diarrhea, regardless of cause.
- Stimulates brush border membrane enzymes that contribute to the complete digestion of starches and sugars in the foregut, reducing hindgut imbalances.



InsulinWise®

US Patent 10,568,352

A synergistic blend of polyphenols and amino acids that support normal metabolic function and healthy insulin levels.

The propriety ingredients in InsulinWise are research-proven to support lower insulin levels and increased adiponectin concentrations in EMS horses. Maintaining normal levels of these hormones and decreasing insulin dysregulation can provide a clinical benefit by reducing the risk of laminitis.

Supplementation is recommended for horses:

- Diagnosed with insulin dysregulation related to metabolic syndrome.
- At risk for developing insulin dysregulation because of lifestyle or breeding.
- With a history of laminitis related to obesity or metabolic syndrome.
- Suffering from pituitary pars intermedia dysfunction (PPID), that are also insulin resistant.



Dosage and administration

SERVING RECOMMENDATIONS

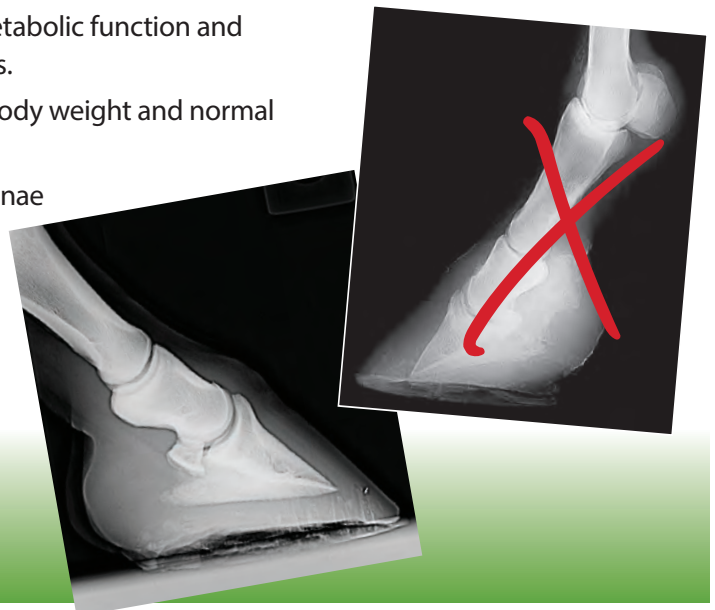
1 scoop = 28 grams

HORSES AND PONIES

- Supplement at a rate of one scoop (28 grams) per day. The amount provided can be split between a.m. and p.m. feedings by offering ½ scoop (14 grams) at each feeding.

The unique blend of ingredients in InsulinWise:

- Maintain normal metabolic function and healthy insulin levels.
- Support a healthy body weight and normal fat distribution.
- Sustain healthy laminae within the hoof.



Available Sizes:

- **2 lb** (0.91 kg) bucket (contains 32 scoops)
- **5 lb** (2.27 kg) bucket (contains 80 scoops)

Active ingredients per scoop (28 g):

Leucine.....	2,100 mg
Lysine.....	1,740 mg
Glutamic Acid.....	1,010 mg
Resveratrol.....	750 mg
Quercetin	500 mg
Proline	470 mg
Alanine	395 mg
Glycine	250 mg

Inactive ingredients:

Dried yeast fermentation solubles, natural and artificial flavors.

Supports healthy insulin and glucose levels.

Research-proven to support normal insulin sensitivity

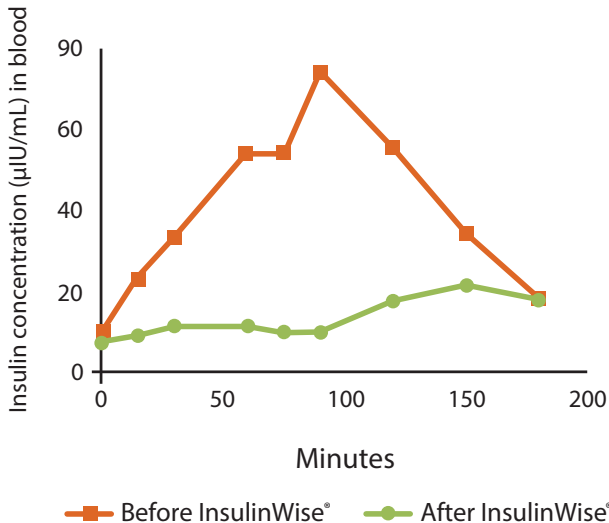
Research at Michigan State University showed:

- Supplemented horses had significantly reduced insulin levels at 60 and 75 minutes following the oral sugar test, signifying increased insulin sensitivity.
- Post-supplementation, a significant decrease in body weight was noted.
- Significant increases in adiponectin were found after the supplementation. Increases in these levels are associated with increased insulin sensitivity and improved glucose uptake.



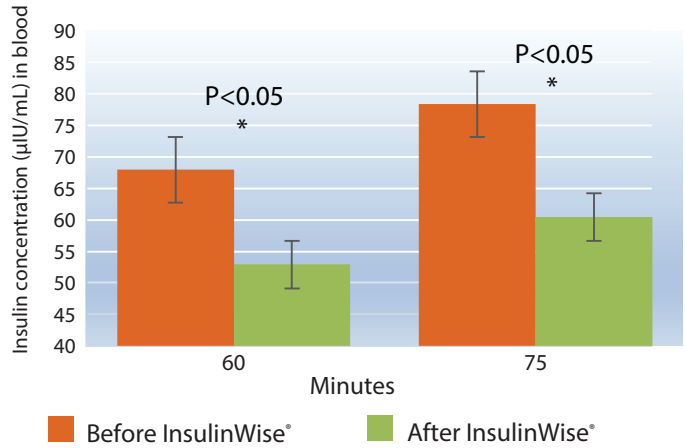
InsulinWise Supported a Decrease in Insulin Resistance

In four of the horses previously identified as insulin resistant, insulin regulation reverted to levels classified as normal after supplementation with InsulinWise.



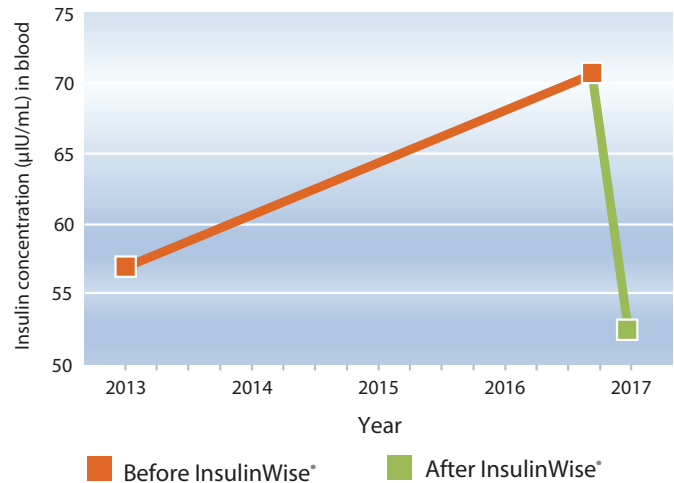
Insulin Concentrations Following OST Challenge

Supplementation with InsulinWise significantly reduced insulin blood levels, signifying increased insulin sensitivity.



Insulin Levels at 60 Minutes During Oral Sugar Tests from 2013 to 2017

Over time, EMS horses became more insulin resistant. Supplementation with InsulinWise significantly reduced insulin levels in the blood, signifying a decrease in insulin resistance.



Manfredi JM, Stapley ED, Nash D. Effects of a dietary supplement on insulin and adipokine concentrations in equine metabolic syndrome/insulin dysregulation. In J Equine Vet Sci 2020;88:102930.



Elevate® W.S.

Natural Vitamin E Liquid

**Supports healthy muscle and nerve cell functions.
Sustains a robust immune response.**

Elevate W.S. is a highly bioavailable source of natural vitamin E. Developed to increase circulating blood levels quickly, it has become the product of choice for veterinarians managing horses and foals with neurological and muscular disorders, compromised immune response, or low fertility rates.

Water-soluble vitamin E is rapidly absorbed and quickly dispersed into the blood and to outlying tissues.

Available Size:

- **236 mL** (8 oz) bottle
(contains a 118-day supply at 1,000 IU per day)

Ingredients:

Vitamin E as d-alpha-tocopherol, polyethoxylated castor oil, water, and n-propyl alcohol.

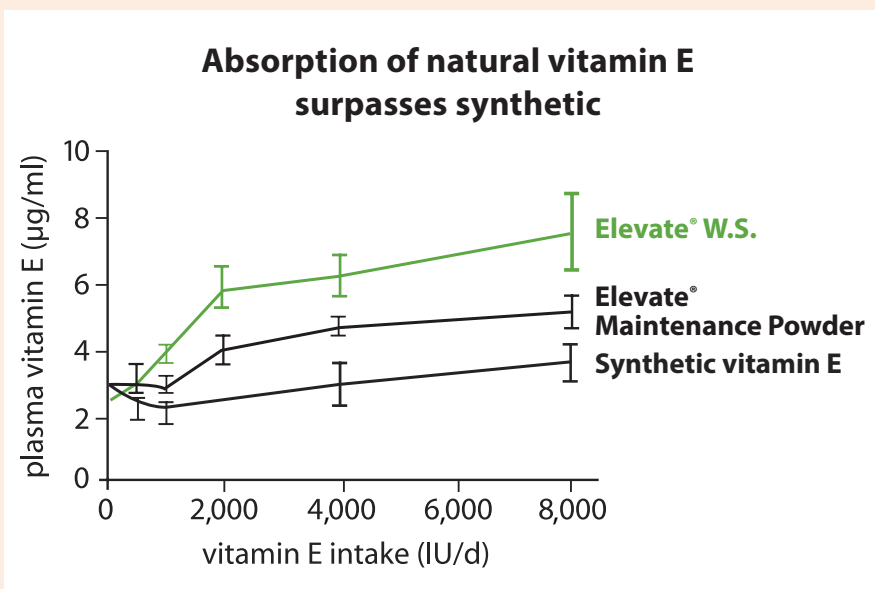
Guaranteed Analysis:

Natural Vitamin E
(Min.) 500 IU/mL

***Fast-acting
Elevate W.S.
raises blood
levels within
72 hours and
crosses the
blood-brain
barrier.***

Source Matters

Studies show that when different sources of vitamin E are compared, dramatic increases in speed of absorption, blood levels and utilization are noted in horses fed Elevate W.S. natural, water-soluble vitamin E liquid. From baseline values, blood levels rose an astonishing 207% when horses were given 8,000 IU of Elevate W.S. Supplementation with natural vitamin E acetate powder (Elevate Maintenance or Concentrate powder) also increased blood levels, but not as quickly. Studies show that plasma levels fell or were only raised slightly when horses were fed synthetic vitamin E powder.



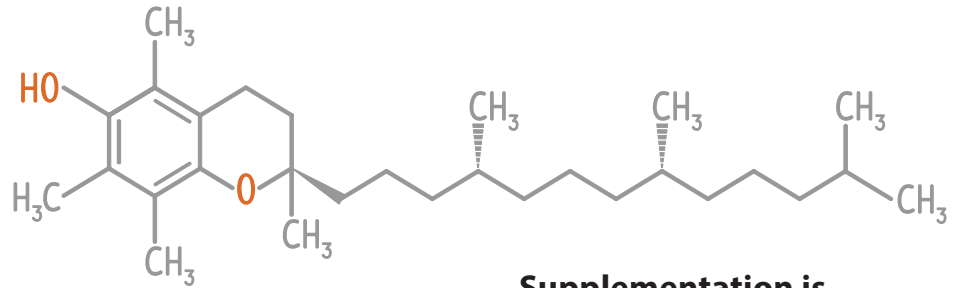
Dosage and administration

FEEDING RECOMMENDATIONS

1 mL = 500 IU vitamin E

- Maintenance: 2 mL per day (1,000 IU vitamin E/day)
- Stalled horses or horses maintained on poor pasture: 2-4 mL per day (1,000-2,000 IU vitamin E/day)
- Intense training: 6 mL per day (3,000 IU vitamin E/day)
- Pregnant and lactating mares: 6 mL per day (3,000 IU vitamin E/day)
- Foals: 6 mL per day (3,000 IU vitamin E/day)
- To support healthy muscle function: 10 mL per day (5,000 IU vitamin E/day)
- To support healthy nerve function: 10-20 mL per day (5,000-10,000 IU vitamin E/day)

For best results, Elevate W.S. should be fed soon after removal from bottle. Do not allow Elevate W.S. to be exposed to light and air, or leave pulled up in a syringe. Protect from extreme heat and freezing.



Supplementation is recommended to support horses/foals challenged by:

- Acute or chronic muscle disorders
- Compromised immune function
- Failure of passive transfer (PFPT or FPT)
- Neurological disease
- Poor reproductive efficiency
- Vitamin E deficiency

MUSCLE, NERVE, IMMUNE SUPPORT





Elevate® Concentrate

Natural Vitamin E Powder

Maintains optimal vitamin E levels that support healthy muscle, nerve and immune functions.

At 5,000 IU of natural vitamin E per serving, Elevate® Concentrate allows you to easily support horses with high vitamin E requirements. The natural vitamin E in Elevate is preferentially absorbed and retained in the tissues.

Elevate vitamin E outperforms synthetic counterparts.

Available Size:

- **2 lb** (0.91 kg) jar
(contains 32 servings)

Ingredients:

d-alpha-tocopheryl acetate (natural vitamin E) and dextrose.

Guaranteed Analysis:

Natural Vitamin E (Min.)
5,000 IU per ounce

Common Sources of Vitamin E

Biopotency

d-alpha-tocopherol (natural, Elevate W.S.)	1.49
d-alpha-tocopheryl acetate (natural, Elevate Concentrate)	1.36
dl-alpha-tocopherol (synthetic)	1.10
dl-alpha-tocopheryl acetate (synthetic)	1.00

Elevate Concentrate powder is easy to feed and retains its potency in a variety of environmental conditions.



Supplementation is recommended to support horses in the following situations:

- When vitamin E levels are deficient.
- Consuming a diet limited in fresh green pasture or those grazing on winter pasture.
- Maintained on dried forages, including overweight horses, laminitic horses, insulin-resistant or metabolically challenged horses.
- In intense training, or competition.
- Aging horses that need additional antioxidant support.
- During short-distance trailering or long-distance shipping.

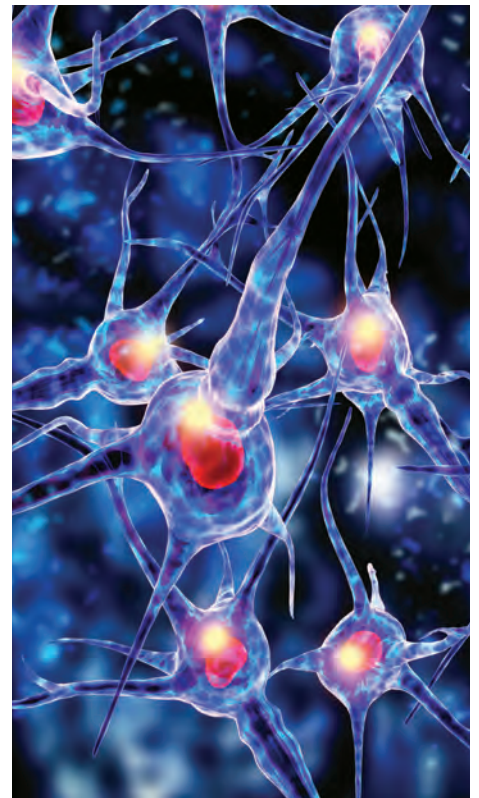
Dosage and administration

FEEDING RECOMMENDATIONS

1 scoop = 1 ounce (5,000 IU of natural vitamin E)

- Maintenance to moderate exercise: ½ scoop per day (2,500 IU vitamin E/day)
- Stalled horses or horses maintained on poor pasture: ½ scoop per day (2,500 IU vitamin E/day)
- Intense competition or training: ½ to 1 scoop per day (2,500 to 5,000 IU vitamin E/day)
- Broodmares and stallions: ½ to 1 scoop per day (2,500 to 5,000 IU vitamin E/day)
- To support healthy muscle function: 1 to 2 scoops per day (5,000 to 10,000 IU vitamin E/day)
- To support healthy nerve function: 1 to 2 scoops per day (5,000 to 10,000 IU vitamin E/day)

Slower acting than Elevate W.S., Elevate Concentrate powder starts to increase blood plasma levels in 3 weeks and typically peaks after 7 to 8 weeks.



MUSCLE, NERVE, IMMUNE SUPPORT



Making the transition from Elevate W.S. to Elevate Concentrate powder.

When switching from Elevate W.S. liquid to Elevate Concentrate powder, we recommend transitioning over a period of 21 days (3 weeks) to reduce the risk of an unwanted drop in vitamin E blood levels.

To transition, slowly taper off the amount of Elevate W.S. fed while adding in an equal amount of Elevate Concentrate.



JointWise™

Supports normal joint functions in horses of all ages.

Outstanding formula supports joints on 4 levels.

- Maintains a balanced immune response within the joint, decreasing damaging inflammation and the development of osteoarthritis.
- Preserves fluid motion and flexibility.
- Supplies the building blocks necessary to support normal cartilage growth and the regeneration of damaged tissues.
- Sustains ample high-quality synovial fluid, which lubricates and nourishes the joints.

Available Sizes:

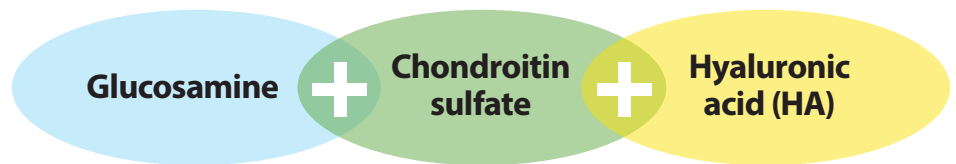
- **2 lb** (0.91 kg) jar (contains 45 scoops)
- **5 lb** (2.27 kg) jar (contains 113 scoops)

Active ingredients per scoop (20 g):

Fermentation Metabolites.....	5,000 mg
Glucosamine HCL	2,500 mg
Glucosamine Sulfate	2,500 mg
Chondroitin Sulfate.....	1,200 mg
Methylsulfonylmethane (MSM).....	1,000 mg
Sodium Hyaluronate.....	100 mg
Manganese Sulfate.....	100 mg

Inactive ingredients:

Distillers dried grains, calcium carbonate, natural and artificial flavors.



Glucosamine is used as a substrate for certain components of the cartilage matrix.

Chondroitin sulfate plays an important role in controlling the enzymes associated with inflammation and tissue destruction.

Hyaluronic acid is an integral component of synovial fluid and articular cartilage and is responsible for lubrication of the joint surfaces.



+

Fermentation metabolites make JointWise truly unique.

- Research shows the compounds that cause the symptoms of arthritis were diminished in animals consuming fermentation metabolites.
- Studies have demonstrated that fermentation metabolites work to maintain a balanced immune response within the body, thus reducing the excessive immune reactions that cause damaging inflammation.

JointWise can be used to support healing in:

- Horses recovering from recent joint injury
- Horses with a history of joint damage
- Mature horses developing signs of joint stiffness or shortened stride
- Seniors with age-related arthritis

Supplementation is recommended to maintain optimal joint function in:

- Performance, race, show and trail horses that are being ridden regularly
- Stallions and broodmares to maintain soundness
- Young horses entering training



*Supporting
a lifetime of
soundness.*



JOINT SUPPORT



Available Sizes:

- **2.75 lb** (1.25 kg) container (contains 44 scoops)
- **10 lb** (4.45 kg) container (contains 160 scoops)

Ingredients:

Ground extruded whole soybeans, lecithin, yeast culture, DL-methionine, L-lysine, zinc proteinate, copper proteinate, biotin, ethylenediamine dihydriodide, and silicon dioxide; preserved with BHT, BHA, and propionic acid.



FootWise™

Maintains a strong, resilient hoof wall; supports the regrowth of healthy hoof; aids in the elimination of dry, flaky hair coats and brittle manes and tails.

Not your run-of-the-mill hoof supplement.

FootWise is scientifically formulated to supply the additional elements needed to maintain healthy hooves and skin.

It contains 20 mg of biotin, as well as effective levels of the chelated trace minerals copper, iodine, and zinc.

Lysine and other high-quality amino acids are included to provide the building blocks for proteins.

Essential fatty acids support resilient skin and a luxurious coat, and contribute to a healthy moisture barrier in the hoof.

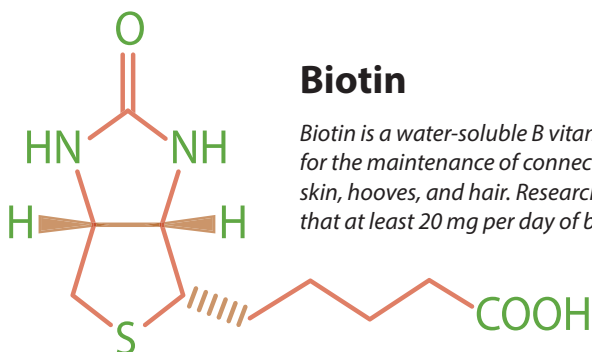
Yeast cultures are added to increase overall digestibility.

Supplementation is recommended when:

- Brittle hooves, chronic cracks, and lost shoes are a reoccurring problem.
- Dry, flaky hair coat and brittle mane and tail are present.
- Hoof regrowth is desired after hoof injury, surgery, or laminitis.
- Hoof problems such as thrush and white line disease are an ongoing challenge.
- Rigorous training or competition schedules and frequent bathing compromise hoof health.
- The necessary nutrients to support proper hoof growth are not included in the feeding program.
- Wet and muddy environment conditions are persistent.

Guaranteed Analysis

	Per 1 oz	Concentration
Methionine (Min.)	3,000 mg	10.6%
Lysine (Min.)	1,000 mg	3.6%
Zinc (Min.)	200 mg	7,100 ppm
Copper (Min.)	65 mg	2,300 ppm
Iodine (Min.)	2 mg	70 ppm
Biotin (Min.)	20 mg	700 ppm



Dosage and administration

FEEDING RECOMMENDATIONS

1 scoop = 1 ounce

Maintenance level: 1 scoop (1 oz) per day

Horses or ponies that need additional support: 2 scoops (2 oz) per day

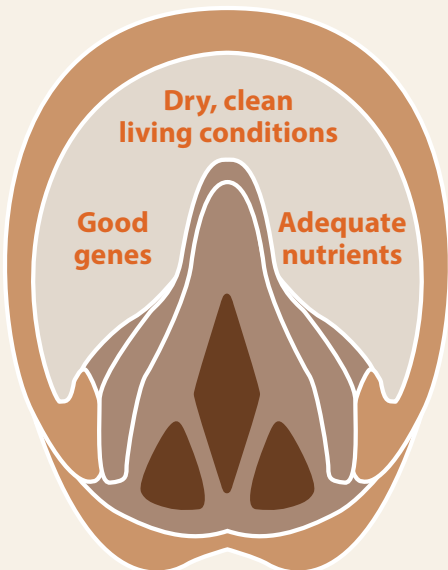


Components of a Healthy Hoof

Basic Requirements

Supportive Ingredients in FootWise™

**Biotin, Zinc,
Copper, Iodine,
Lysine,
Methionine**
Provide the
building blocks
of hoof structures.



**Dry, clean
living conditions**

**Good
genes**

**Adequate
nutrients**

**Omega
Fatty Acids,
Lecithin**
Maintain the
hoof's protective
moisture barrier.

Essential support for problem horses

Horse owners struggle with crumbling feet that won't hold a shoe, bruised soles, white line disease, quarter cracks, laminitis, and hoof injuries. While the cause of the problem varies, the need for proper nutrition to support healthy hoof growth remains the same. Make supplementation with FootWise a key part of your treatment plan.





ElectrolyteWise™

Supports optimal electrolyte balance, energy conversion, and hydration in horses of all ages.

When horses sweat, the demand for specific electrolytes, trace minerals, and vitamins can exceed the available supplies. ElectrolyteWise keeps horses drinking as it replenishes the key nutrients that play a role in optimal fluid balance, energy metabolism, and muscle function.

ElectrolyteWise is so much more than just an electrolyte.

This concentrated, low-sugar formula stimulates the thirst response and replaces the key nutrients lost when horses sweat. ElectrolyteWise replenishes potassium, sodium, and chloride in the proper 1:2:4 ratio. It replaces lost B vitamins that play a key role in energy metabolism and restores the trace minerals necessary for effective metabolic and muscle functions.

Supplementation is recommended when horses are:

- Sweating profusely during training or competition even in cool weather
- Working harder or longer than they are normally accustomed to
- Being transported regardless of distance
- Exposed to a stressful situation
- Not drinking well enough to maintain a healthy level of hydration

Guaranteed Analysis

	Per 1 oz	Concentration
Calcium (Min.)	170 mg	0.4%
Calcium (Max.)		0.8%
Phosphorus (Min.)	150 mg	0.53%
Salt (Min.)	16.2 g	57%
Salt (Max.)	17.6 g	62%
Sodium (Min.)	6.4 g	22.4%
Sodium (Max.)	6.9 g	24.4%
Magnesium (Min.)	160 mg	0.56%
Potassium (Min.)	3.5 g	12.5%
Chloride (Min.)	13.2 g	46.4%
Copper (Min.)	10 mg	350 ppm
Iron (Min.)	52 mg	1,860 ppm
Manganese (Min.)	4 mg	150 ppm
Zinc (Min.)	25 mg	900 ppm
Niacin	19.7 mg	315 mg/lb
d-pantothenic acid	18.3 mg	293 mg/lb

Keeps horses drinking and hydrated.

Available Sizes:

- **5 lb** (2.27 kg) bucket (contains 80 scoops)
- **20 lb** (9.09 kg) bucket (contains 320 scoops)

Ingredients:

Salt, potassium chloride, dicalcium phosphate, magnesium oxide, dextrose, iron proteinate, zinc proteinate, copper proteinate, manganese proteinate, niacin, d-calcium-pantothenate, natural and artificial flavors, and FD&C Red #40 Aluminum Lake.

Dosage and administration

FEEDING RECOMMENDATIONS

1 scoop = 1 ounce

Level of work	Normal environment (oz/day)	Hot, humid environment (oz/day)
Rest	0	1
Light work	1	1-2
Moderate work	2	2-3
Heavy work	3	3-4



Guidelines for determining workload

Horses will sweat more in hot, humid climates. When it is very dry or cold, sweat may evaporate quickly and be less noticeable.

Light Work:	Visible Sweat (up to 5 liters of sweat loss) <i>For example: dressage, western and English pleasure, trail horses, equitation</i>
Moderate Work:	Dripping Sweat (5-10 liters of sweat loss) <i>For example: jumping horses, racehorses, barrel racing, cutting, roping</i>
Heavy Work:	Dripping Sweat for Extended Periods (more than 10 liters of sweat loss) <i>For example: upper level three-day event, western performance horses, polo ponies</i>





NutrientWise™

Fills the nutritional gaps found in the diets of easy keepers, horses with metabolic syndrome, and horses that need additional nutritional support.

NutrientWise is low in calories but rich in natural vitamins and chelated minerals. It was formulated specifically to meet the nutritional needs of horses and ponies that consume mostly forages with little access to fresh grass and fortified concentrates.

Why choose NutrientWise?

Loaded with readily available chelated trace minerals and a host of vitamins, **including essential natural vitamin E**, NutrientWise is your go-to solution when you need to raise a horse's level of nutrition without adding calories to the diet.

Supplementation is recommended when horses are:

- Consuming diets limited in fresh green grass and/or eating poor-quality hay.
- Being fed less than the recommended amounts of fortified concentrates.
- Recovering from injury where additional nutrition is needed to promote healing.
- Recuperating from illness where the digestive tract has been compromised or when a restricted diet might interfere with adequate nutrient intake.
- Senior horses that need additional nutritional support.
- Training and competing vigorously and in need of additional nutrients.
- Last trimester pregnant or lactating mares and breeding stallions.

Dosage and administration

FEEDING RECOMMENDATIONS

1 scoop = 2 ounces

Mix recommended amount in total daily grain ration or feed alone.



Guaranteed Analysis

	Per 4 oz	Concentration
Crude Protein (Min.)	15 g	14%
Calcium (Min.)	3 g	2.5%
Calcium (Max.)	3.4 g	3.0%
Phosphorus (Min.)	1.5 g	1.5%
Copper (Min.)	136 mg	1,200 ppm
Selenium (Min.)	1.8 mg	16 ppm
Zinc (Min.)	400 mg	3,520 ppm
Vitamin A (Min.)	40,000 IU	162,000 IU/lb
Vitamin D (Min.)	4,000 IU	16,200 IU/lb
Vitamin E (Min.)	720 IU	2,880 IU/lb
Thiamine (Min.)	24 mg	96 mg/lb
Choline (Min.)	650 mg	2,600 mg/lb
Folic Acid (Min.)	12 mg	48 mg/lb
Niacin (Min.)	120 mg	480 mg/lb
Pantothenic Acid (Min.)	50 mg	200 mg/lb
Riboflavin (Min.)	40 mg	160 mg/lb
Vitamin B12 (Min.)	120 mcg	480 mcg/lb

Available Sizes:

- **10 lb** (4.54 kg) container (contains 80 scoops)
- **20 lb** (9.09 kg) container (contains 160 scoops)

Ingredients:

Dehydrated alfalfa meal, wheat middlings, monosodium phosphate, calcium carbonate, yeast culture, zinc sulfate, zinc proteinate, ferrous sulfate, manganese proteinate, copper sulfate, copper proteinate, ethylenediamine dihydriodide, cobalt sulfate, sodium selenite, vitamin A acetate in gelatin, vitamin D3 supplement, d-alpha-tocopherol acetate, vitamin E supplement, vitamin B12 supplement, menadione sodium bisulfite complex, riboflavin supplement, d-calcium pantothenate, thiamine mononitrate, niacin supplement, kelp meal, pyridoxine hydrochloride, folic acid, choline chloride, and biotin.

**Product of choice
for EMS horses:
11% NSC
2.9% ESC
14% Protein**

WeightGainWise™

A calorie-rich, high-fat supplement that maintains optimal body weight and sustains a healthy appetite.

Maintaining condition and supporting a healthy digestive tract can be a challenge in the hard keeper. Whether it is a high-performance horse, a retired senior, or a horse with chronic muscle myopathy, the ability to gain weight and maintain healthy body condition is essential to wellness.

The caloric density of fat makes it an incredible source of energy.

Fats contain 2.25 times the energy of carbohydrates. Supplementation with fat can reduce the amount of starchy/sugary grains needed in the diet. Decreasing the meal size reduces the risk of colic, laminitis, and insulin resistance-related disorders. Smaller meal sizes are also more attractive to picky eaters. Once digested, fat is utilized without producing the extreme hormone spikes known to cause excitability.

Supplementation is recommended for:

- Chronic hard keepers
- Horses with certain muscle myopathy
- Horses recovering from injury or illness
- Metabolically challenged horses that need extra calories
- Horses that need extra calories in the cold winter months
- Sales weanlings and yearlings
- Young horses in training
- Mares in late gestation and lactation
- Performance horses, racehorses and show horses
- Senior horses

Dosage and administration

FEEDING RECOMMENDATIONS

1 scoop = 4 ounces

Feed 2 scoops (8 oz) daily. For best results, split into two 1-scoop (4 oz) servings.

Guaranteed Analysis

Crude Fat (Min.)	50%
<i>Saccharomyces cerevisiae</i>	9x10 ⁸ CFU/lb
<i>Lactobacillus acidophilus</i>	5x10 ⁷ CFU/lb
<i>Enterococcus faecium</i>	3.5 x 10 ⁶ CFU/lb
NSC level 10%	

Concentration



Available Sizes:

- **8 lb** (3.64 kg) bucket (contains 32 scoops)
- **20 lb** (9.09 kg) bucket (contains 80 scoops)

Ingredients:

Stabilized rice bran, flaxseed oil, ground flax, flax meal, lecithin, dried *Enterococcus faecium* fermentation product, dried *Lactobacillus acidophilus* fermentation product, dried *Trichoderma longibrachiatum* fermentation extract, dried *Aspergillus niger* fermentation extract, dried *Bacillus subtilis* fermentation extract, dried *Bacillus subtilis* fermentation solubles, animal fat, yeast culture, and BHA (as a preservative).

Feed as little as 4 oz to 8 oz per day.

WEIGHT AND PERFORMANCE SUPPORT

BreatheWise™

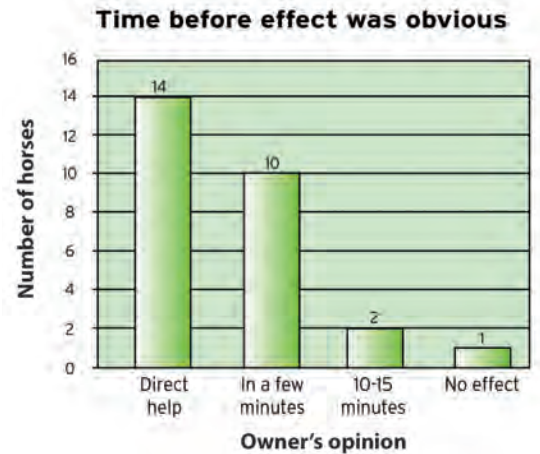


A unique, all-natural cellulose powder that maintains normal respiratory function.

BreatheWise forms a colorless, thin mucus-like gel in the lining of the nasal passages, which traps dust, mold spores, and other airborne allergens, thereby supporting the protective functions of the mucous membranes.

BreatheWise provides a unique barrier to allergens that is research proven.

In a 2008 study conducted at Bollerup Horse Clinic in Sweden, BreatheWise had an immediate effect on coughing horses; 89% of the horses tested found relief from their coughing symptoms either immediately or within 10 to 15 minutes after administration.



Research shows fast, long-acting relief.

In an in vitro study conducted at the National Pollen and Aerobiology Research Unit (University of Worcester, United Kingdom) the diffusion of the dust mite allergen through the gel formed by the unique cellulose powder in BreatheWise was compared to a control agar gel. The cellulose gel in BreatheWise significantly slowed diffusion. After 15 minutes, 69% of the allergens had diffused through the control gel compared with only 1.9% diffusion in the cellulose gel during the same time period. After 5 hours, 100% had diffused through the control compared with 44% in BreatheWise.

BreatheWise is recommended for:

- All horses housed in barns and stables where hay and bedding are present.
- Horses being transported, during both short and long haul trips.
- Pastured horses when the pollen count is elevated.
- Performance horses that school or compete in a dusty environment (arenas, rings, indoors).
- Racehorses of all types.

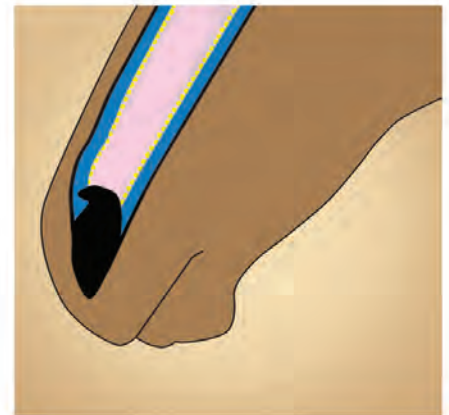


Available Size:

A package of two **2,000 mg** bottles (an approximate 40-day supply for one horse)

Ingredients:

Natural cellulose powder.
BreatheWise is drug-free.



Dosage and administration

DIRECTIONS FOR USE

Use twice daily. Safe to administer more often if required. Prior to use, shake bottle.

BreatheWise should be administered before entering any environments containing airborne allergens, or dusty environments such as barns, riding arenas, and racetracks. BreatheWise is also beneficial to horses on pasture on days with high pollen counts.

BreatheWise can be used year-round and administered as often as you feel is needed by the horse.

Administration

- 1) Test the bottle first, by squeezing the bottle away from yourself. Test the pressure needed to administer an ideal dose, which is approximately an 8- to 10-inch plume of powder.
- 2) Stand by the horse's shoulder and wrap your right arm around the horse's head with your hand resting on the horse's nose. This enables you to get the horse in a firm but gentle headlock.
- 3) Hold the head firmly and then with your other hand place the nozzle of BreatheWise gently into the nostril and squeeze to deliver one puff of powder.
- 4) Repeat the above for the other nostril.

The key to getting the best results is to make sure adequate pressure is applied to the bottle to deliver a plume of powder that will cover the entire nasal passage.

If the bottle should block for any reason (this can be caused by moisture from the horse's nose mixing with the powder), push a needle into the bottle's nozzle to clear the blockage.

BreatheWise filters out and traps dust, mold spores, and other airborne particles inhaled into the nasal passages



Pollen spores

RESPIRATORY SUPPORT

Airborne allergens can lead to damaging inflammation.



VETERINARY FORMULA
Wiser Concepts[®]

KPPvet.com

Developed by:



**The horse that matters to
you matters to us[®]**



P.O. Box 1013 • Versailles, KY 40383 • 800-772-1988 • wiserconcepts@KPPusa.com