



BoneWise®

Supports bone development in horses of all ages.

BoneWise contains a unique form of calcium, a calcareous marine alga known as Lithothamnion.

The natural minerals in Lithothamnion are easily digested and absorbed; they are research-proven to maintain optimal bone remodeling and healthy bone density.

The minerals found in Lithothamnion are arranged in a distinctive honeycomb construction that increase digestibility. Because of its varied crystalline forms and honeycomb structure, Lithothamnion provides a large surface upon which digestive enzymes can act, allowing for the optimal release and uptake of minerals over extended periods of time. Lithothamnion contains the trace minerals magnesium, boron, silicon, zinc, and manganese.

Available Sizes:

- **10 lb** (4.53 kg) bucket (contains 80 scoops)
- **20 lb** (9.09 kg) bucket (contains 160 scoops)

Ingredients:

Seaweed-derived calcium, ground wheat, flaxseed meal, yeast culture, soybean oil, magnesium oxide, zinc polysaccharide complex, copper polysaccharide complex, manganese polysaccharide complex, vitamin D3 supplement, natural and artificial flavors.

Supplementation is recommended when horses are:

- Confined to a stall/laid up
- Competing or racing regularly
- Exhibiting signs of bucked shins, osteochondritis dissecans (OCD), and other developmental bone diseases
- Growing (weanlings, yearlings and 2-year-olds)
- Training
- Recovering from a skeletal injury
- In the third trimester of pregnancy



Dosage and administration

FEEDING RECOMMENDATIONS

1 scoop = 2 ounces

Mix into feed at the rate of 2 scoops (4 oz) daily for all classes and ages of horses. When possible, split the amount into two 2-oz servings per day.



Guaranteed Analysis

	Per 4 oz	Concentration
Calcium (Min.)	16 g	14%
Calcium (Max.)	18 g	16%
Magnesium (Min.)	3,400 mg	3%
Zinc (Min.)	97 mg	860 ppm
Copper (Min.)	43 mg	380 ppm
Manganese (Min.)	41 mg	360 ppm
Vitamin D3 (Min.)	3,750 IU	15,000 IU/lb



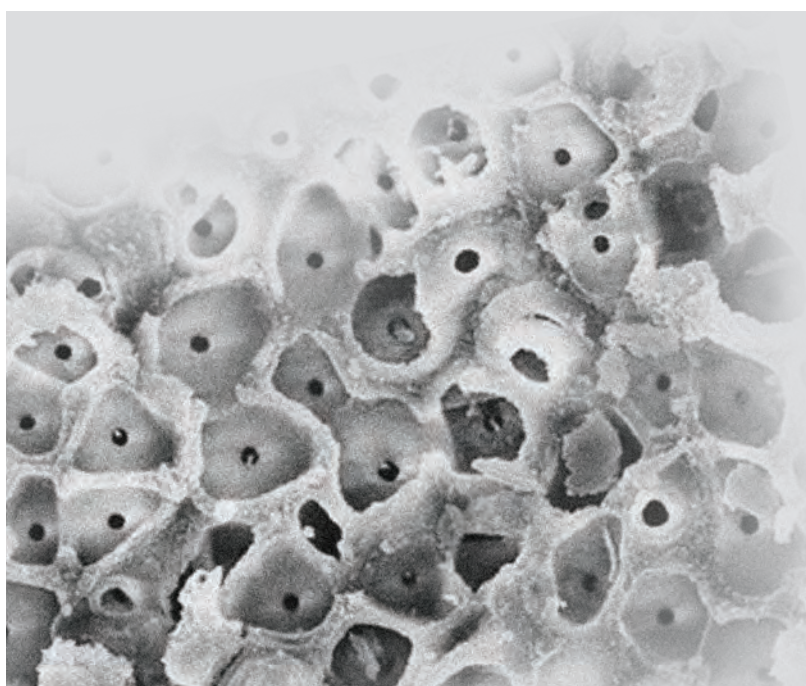
Research at Michigan State University found that at the end of a trial, horses supplemented with Lithothamnion had 11% more bone mineral content than the control group.

Results of Lithothamnion Supplementation:

- Significant increase in blood markers for bone metabolism and density
- Increased osteocalcin levels (measure of bone formation)
- Increased CTX-1 levels (measure of bone resorption)
- 11% greater bone mineral content at the end of the trial as compared to the calcium carbonate supplemented group



SKELETAL SUPPORT



Lithothamnion's unique honeycomb structure makes minerals readily available

- Maintains optimal skeletal development in growing horses.
- Supports strong resilient bones in performance horses.
- Sustains healthy bone density levels in layups.